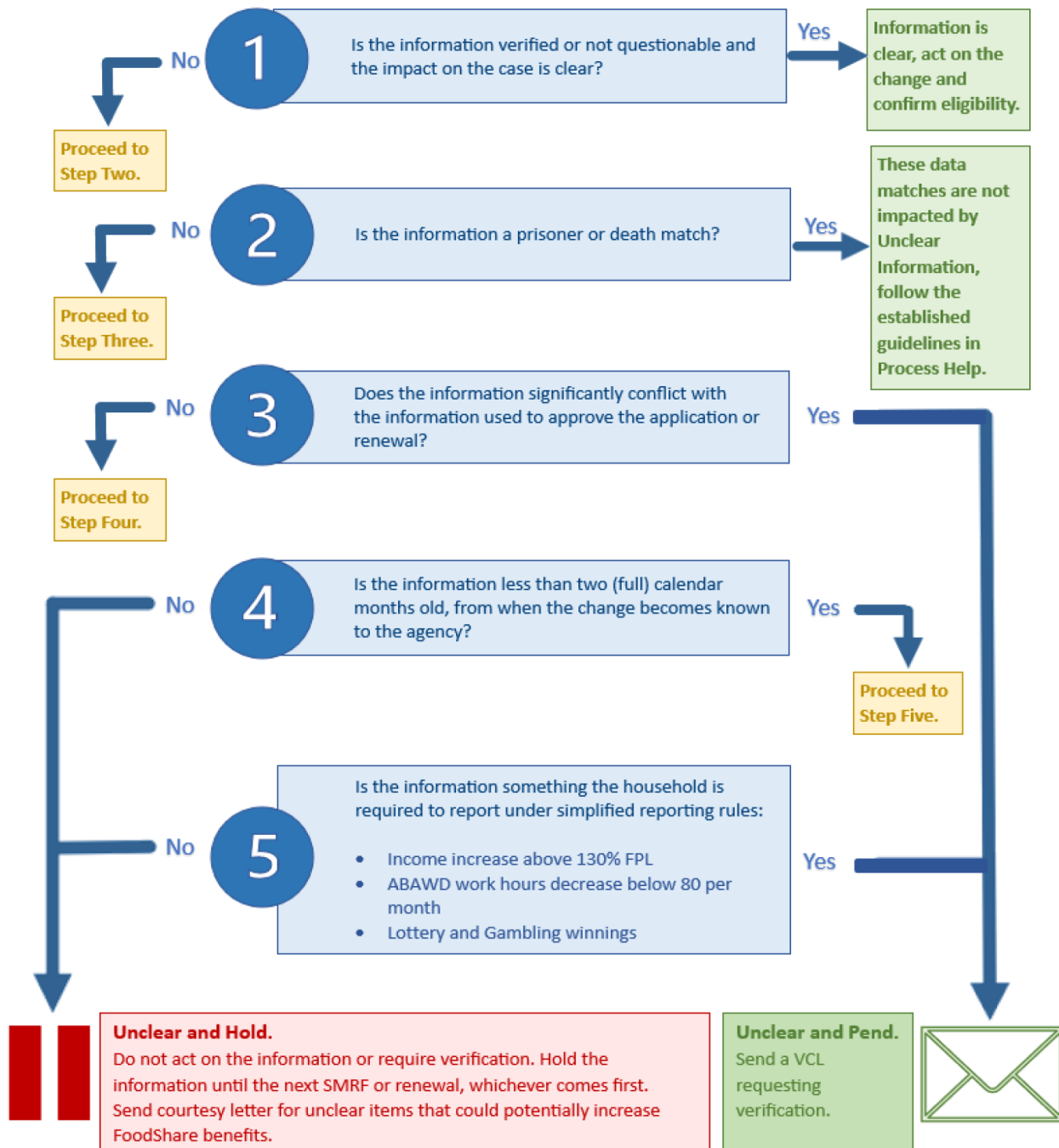


## Processing Reported Changes Flowchart



\*\*\*Remember\*\*\*

### 6.1.1 Change Reporting for All Food Units (Simplified)

All food units are subject to simplified reporting rules. Simplified reporting rules mean food units are only required to report three things during their certification period outside of their SMRF and renewal:

\*When their assistance group's gross monthly income received goes above 130% FPL

\*When an ABAWD's work hours drop below 80 hours per month

\*When a person in the food unit has received a substantial lottery or gambling winning (see Section 6.1.1.1 Substantial Lottery or Gambling Winning) 130% FPL Reporting

The food unit must report by the 10th of the following month when the assistance group's (see Section 3.3.1 Food Unit/FoodShare Assistance Group/Relationships) gross monthly income received exceeds 130% FPL (see Section 8.1.1 Income Limits).

The gross monthly income limit is based on the assistance group size that existed at the time of its most recent certification action, regardless of any subsequent changes in the size of the assistance group.