

Child Care Provider Roles and Responsibilities

FOR THE SCHOOL YEAR 2020-2021

This flyer outlines general expectations for the support a child care provider or school teacher **could** provide to children during a school day in 2020-2021.



What to expect from your child care provider

Provide a safe and nurturing environment for children while attending virtual school.

Provide physical and emotional care in place of the child's family.

Provide time and space for children to engage in homework activities, IF it is part of provider's programming.

Provide developmentally appropriate non-school directed activities, experiences, and materials including outdoor learning opportunities.

What to expect from your child's school teacher

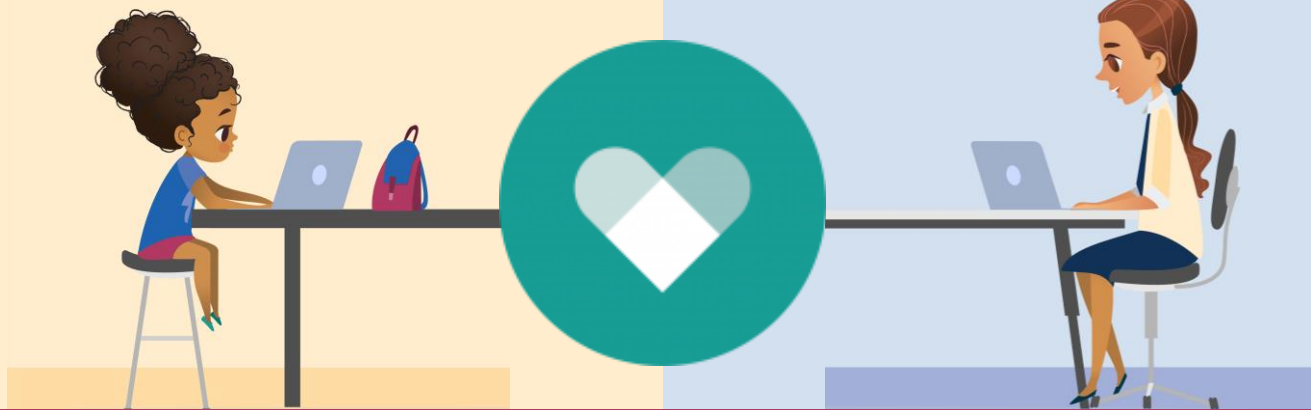
In-person or virtual teaching environment

Provide instruction (synchronous or asynchronous) during the school day.

Respond to educational questions during school day.

Answer questions and provide homework assistance.

Provide education needed to receive credit and proceed to the next grade level.



Child care providers must ensure that they do not provide any instructional services that supplant or duplicate the academic program of any public or private school. This means that providers cannot provide the main instruction, but may assist with schoolwork as they would any other homework. It is a child care provider's decision on which services (e.g. Wi-Fi access, virtual space) they can provide and we encourage ongoing communication between the child care program and parents.

Note: Some child care providers may not have Wi-Fi access for the children in their care and may not provide virtual space, but these child care programs could still receive a Wisconsin Shares authorization for eligible families.



Wisconsin Department of
Children and Families